

Stitch



abstracta

www.abstracta.se



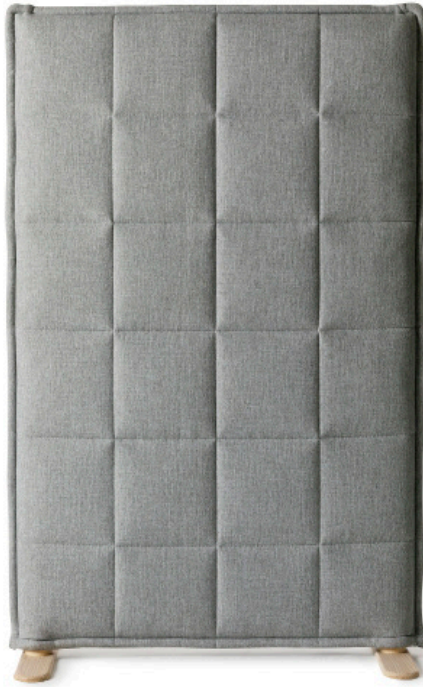
Absorption/
Absorption



Dämpning/
Attenuation

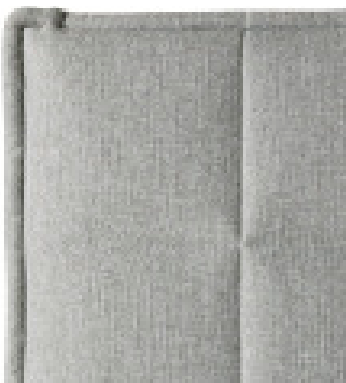
Stitch

Design Stefan Borselius



Inspirerad av soffor, kuddar, filtar och dunjackor har formgivaren Stefan Borselius tillsammans med Abstracta tagit fram skärmen Stitch. Kombinationen av de olika materialen i skärmen adderar ytterligare bra akustiska värden.

Inspired by sofas, cushions, rugs and padded down jackets, designer Stefan Borselius has worked alongside Abstracta to develop the screen Stitch. The combination of different materials in the screen adds further acoustic values.



Skärmen består av en trästomme med ett fodral av ljudabsorberande fiberfyllning klätt med ett tyg med sydda rutmönster.

The screen consists of a wooden frame, with a cover made of sound absorbing fibre filling upholstered with thick lined fabric with embroidered check patterns.



Benen är tillverkade av lackad ask och har likt skärmen ett mjukt formspråk.

The legs are made from lacquered ash, and have, similar to the screen, a soft expression.



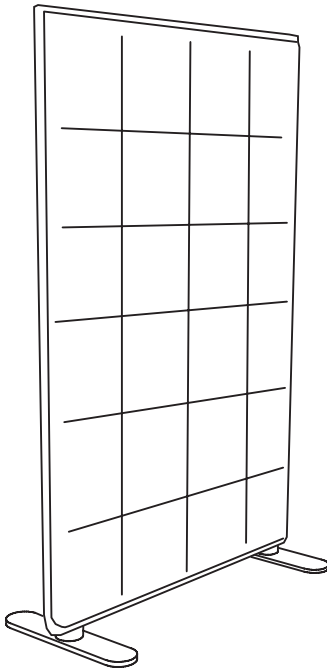
Skärmens tjocklek och uppbyggnad gör Stitch till en mycket bra ljudabsorbent. Den både absorberar och dämpar ljud.

The thickness and structure makes Stitch an excellent sound absorber. It both absorbs and attenuates soundwaves.



Teknisk information/Technical information

Mått Stitch
/Mått Stitch



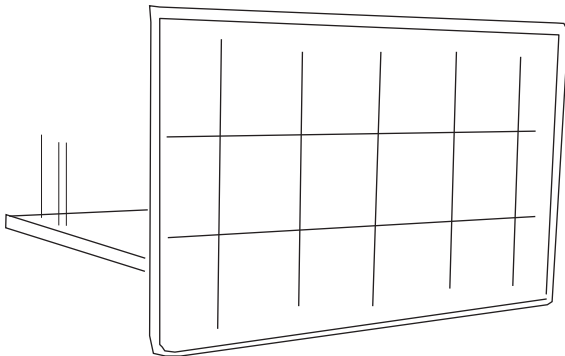
Golvskärm/
Floor screen

b×h×d/w×h×d mm
810x1540x85
1060x1540x85
1310x1540x85

Ben/Legs



Ask/ Ash

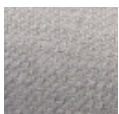


Bordsskärm/
Table screen/

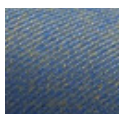
b×h×d/w×h×d mm
860x650x85
1460x650x85
1660x650x85
1860x650x85

Färgval/Color Choices

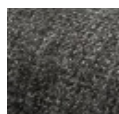
Salsa



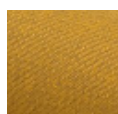
-30



-31



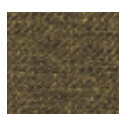
-32



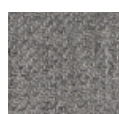
-33



-34



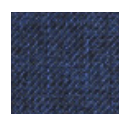
-35



-36



-39



-40



abstracta

info@abstracta.se
www.abstracta.se